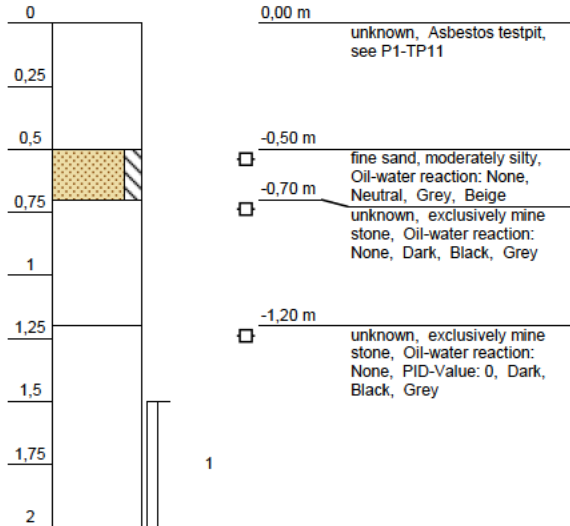




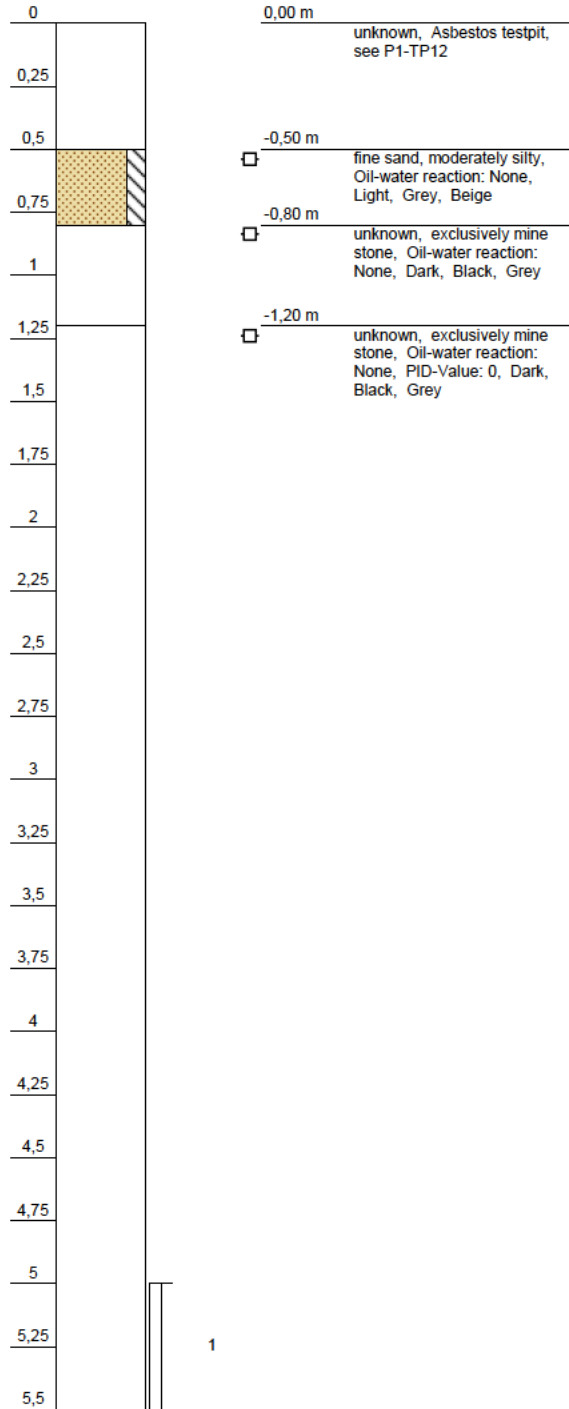
Code: BP1-001  
Date: 29/11/2012

Groundwater level: m      Depth: 2 m



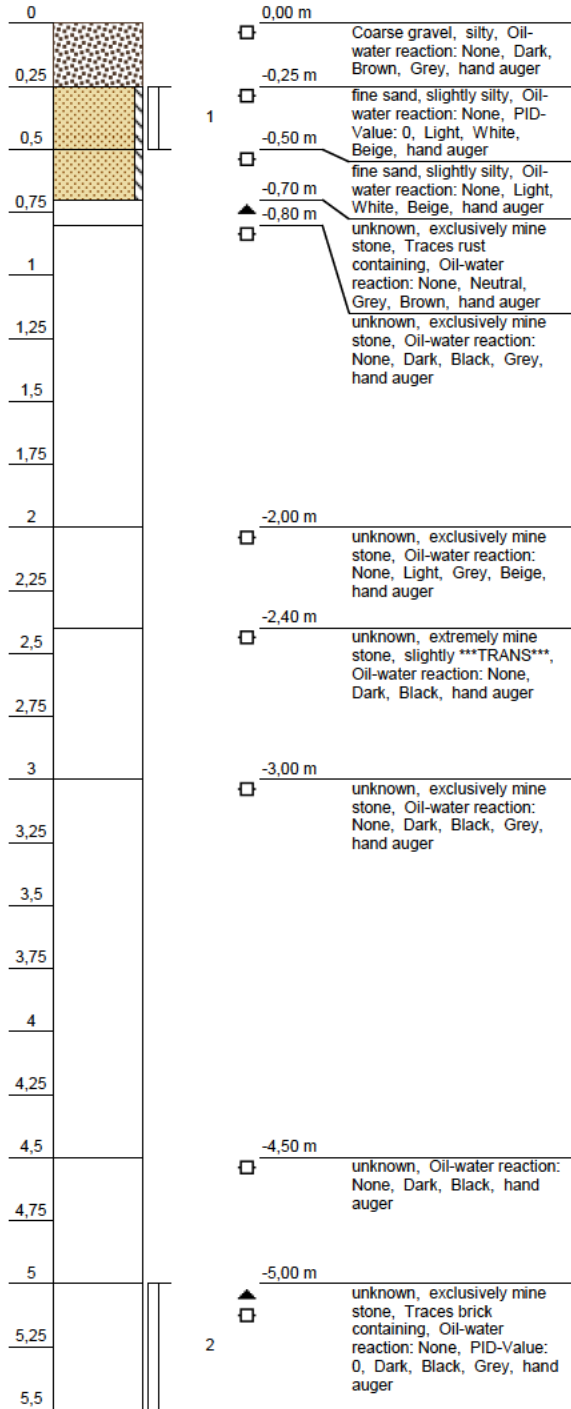
Code: BP1-002  
Date: 29/11/2012

Groundwater level: m      Depth: 5,5 m



Code: BP2-003  
Date: 27/11/2012

Groundwater level: m      Depth: 5,5 m



Code: BP2-004  
Date: 27/11/2012

Groundwater level: m      Depth: 2 m

