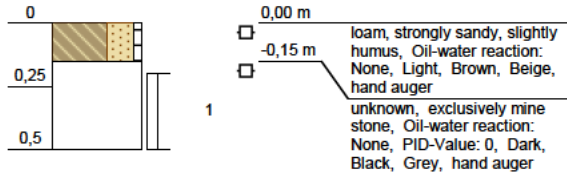


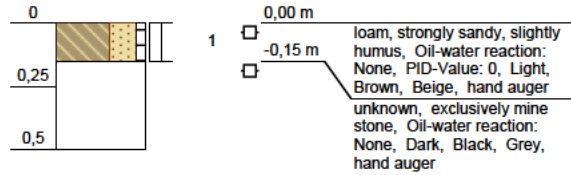
Code: BN2-005
Date: 19/11/2012

Groundwater level: m Depth: 0,5 m



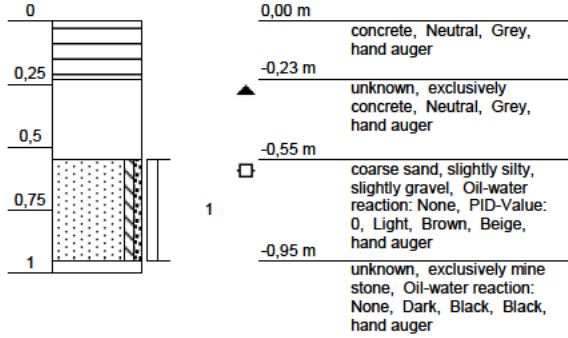
Code: BN2-006
Date: 19/11/2012

Groundwater level: m Depth: 0,5 m



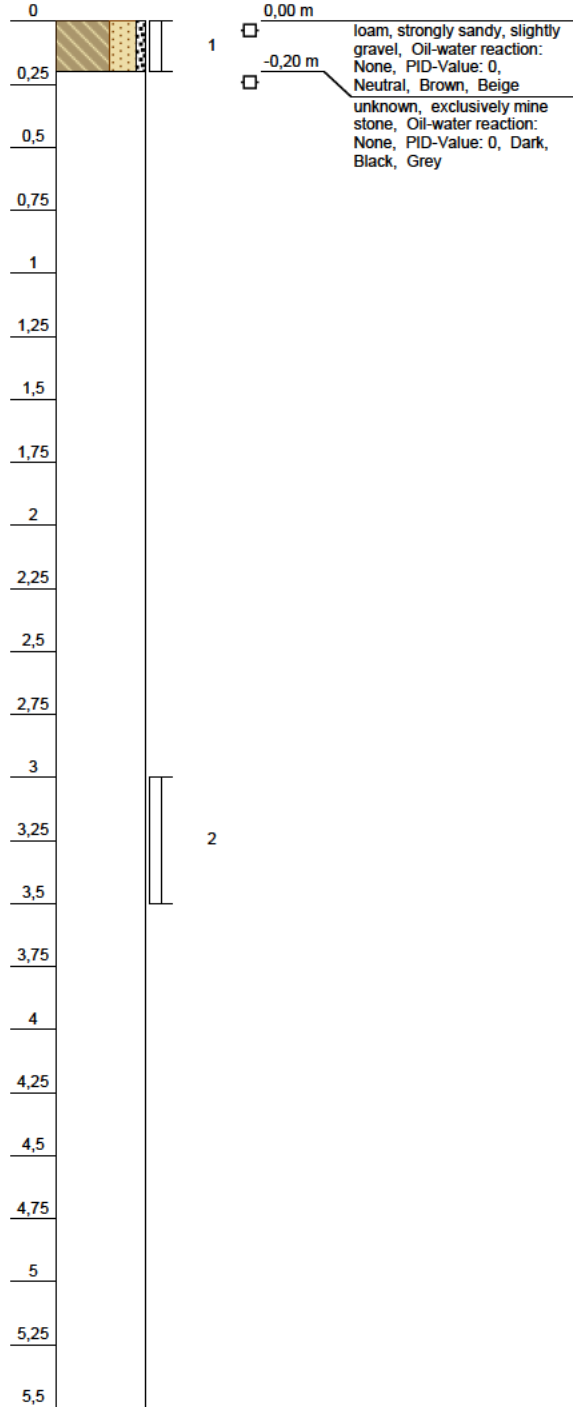
Code: BN2-007
Date: 19/11/2012

Groundwater level: m Depth: 1 m



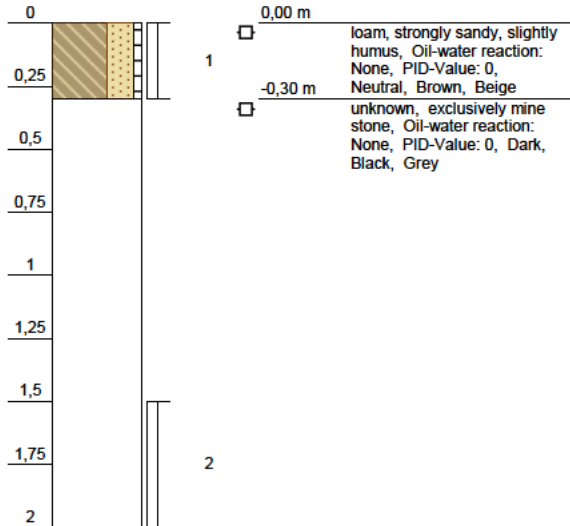
Code: BN2-008
Date: 19/11/2012

Groundwater level: m Depth: 5,5 m



Code: BN2-009
Date: 19/11/2012

Groundwater level: m Depth: 2 m



Code: BN2-010
Date: 19/11/2012

Groundwater level: m Depth: 1,8 m

