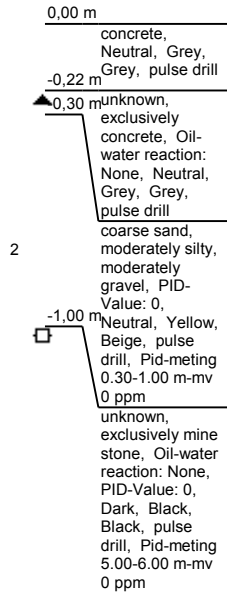
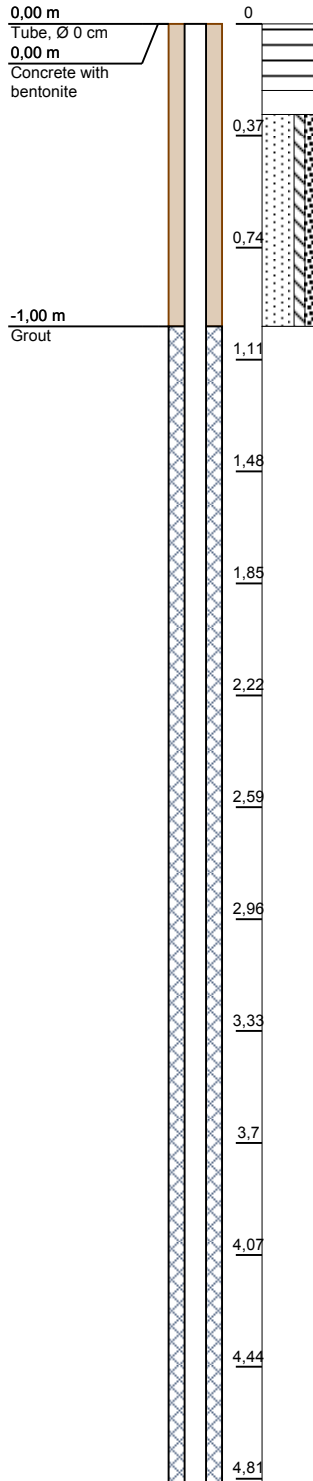




Code: PBMW01 - 1

Date: 6/11/2012

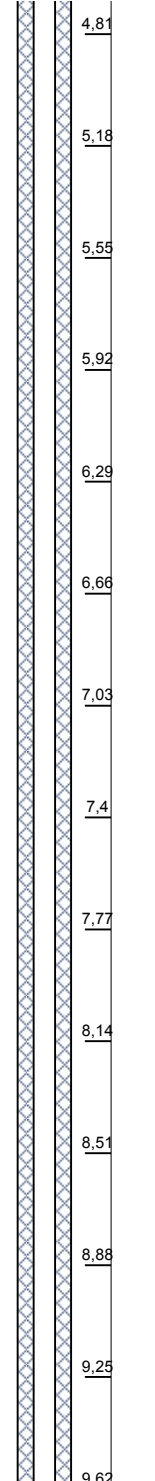
Groundwater level: 16,5 m Depth: 18,5 m



Code: PBMW01 - 2

Date: 6/11/2012

Groundwater level: 16,5 m Depth: 18,5 m



1

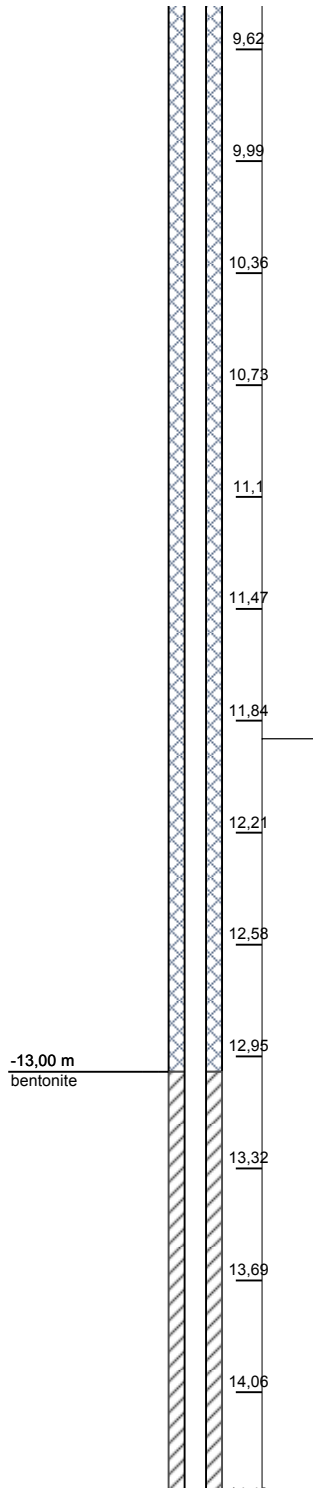
Project code: 46326246

Project name: EBS Brunssum - Complete

Code: PBMW01 - 3

Date: 6/11/2012

Groundwater level: 16,5 m Depth: 18,5 m

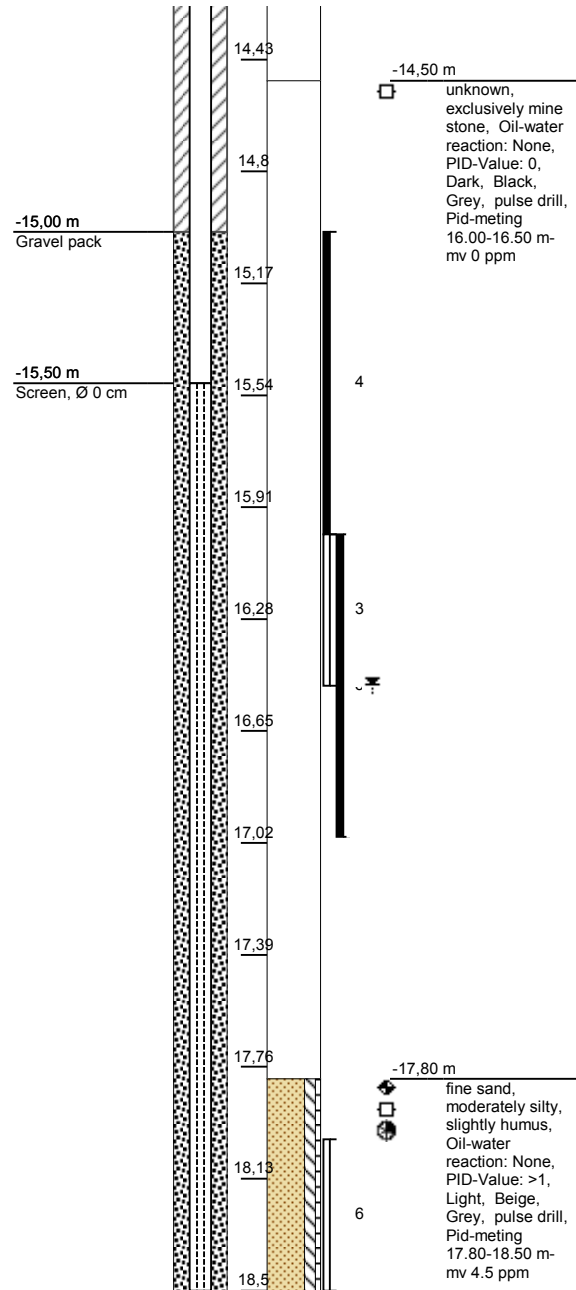


Project code: 46326246

Code: PBMW01 - 4

Date: 6/11/2012

Groundwater level: 16,5 m Depth: 18,5 m



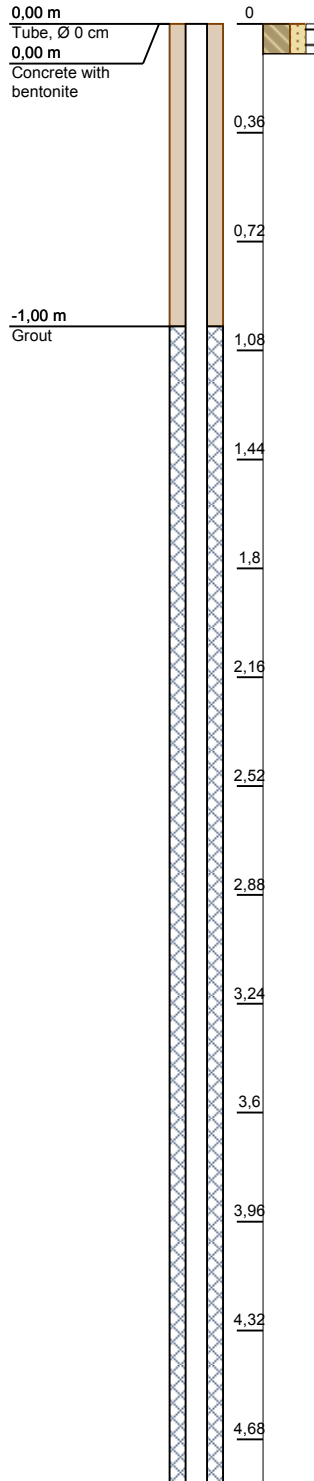
Project name: EBS Brunssum - Complete



Code: PBMW02 - 1

Date: 22/11/2012

Groundwater level: 16 m Depth: 18 m

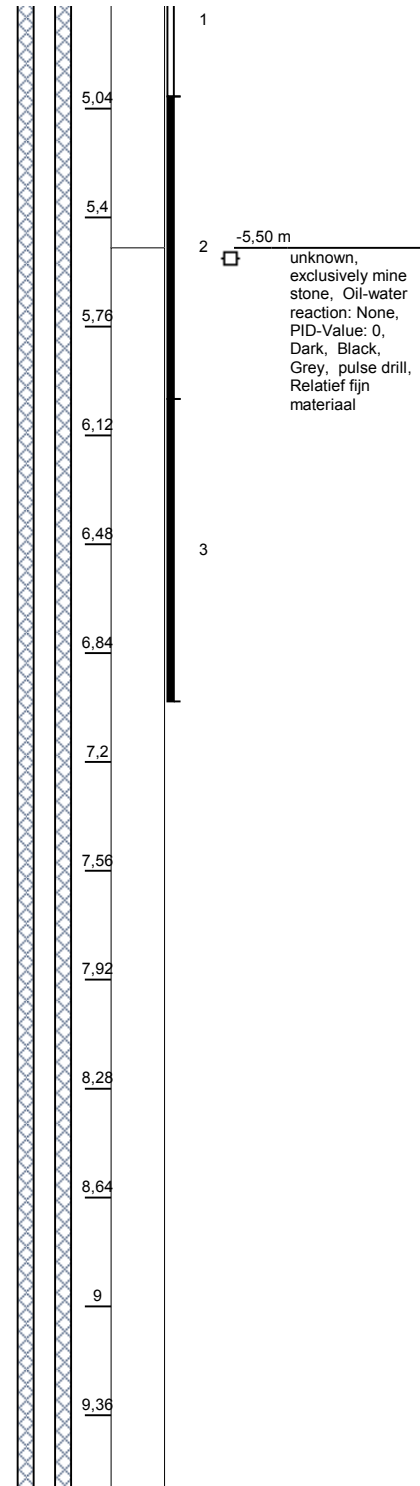


Project code: 46326246

Code: PBMW02 - 2

Date: 22/11/2012

Groundwater level: 16 m Depth: 18 m



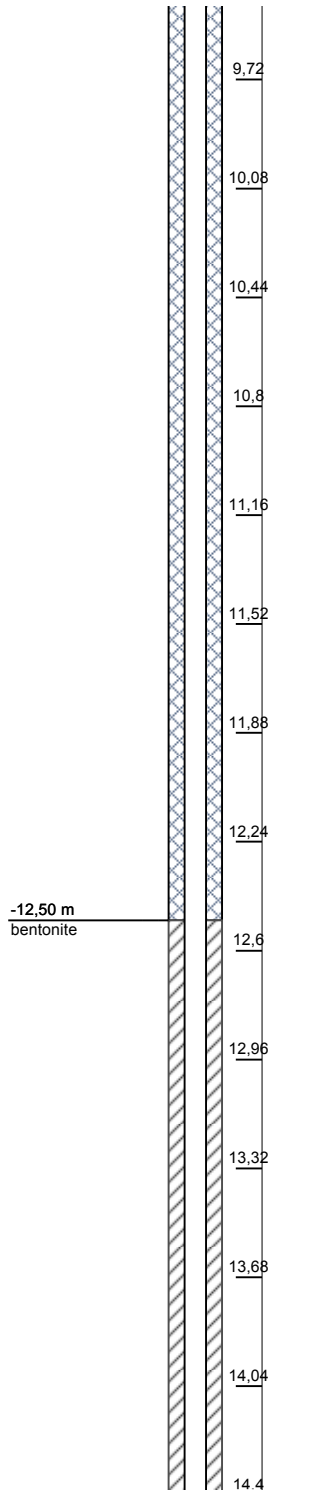
Project name: EBS Brunssum - Complete



Code: PBMW02 - 3

Date: 22/11/2012

Groundwater level: 16 m Depth: 18 m

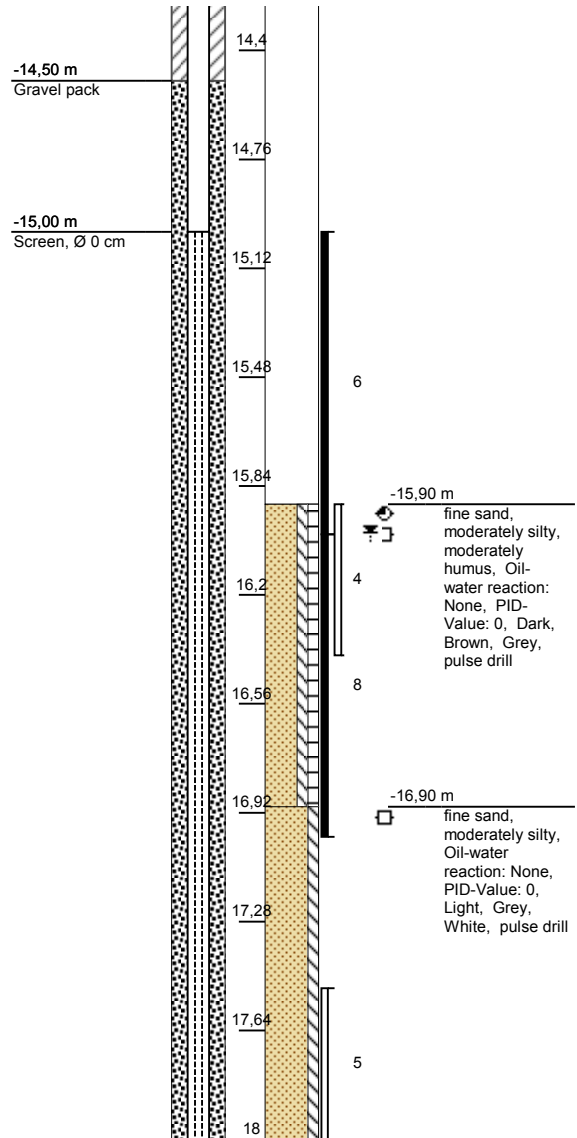


Project code: 46326246

Code: PBMW02 - 4

Date: 22/11/2012

Groundwater level: 16 m Depth: 18 m



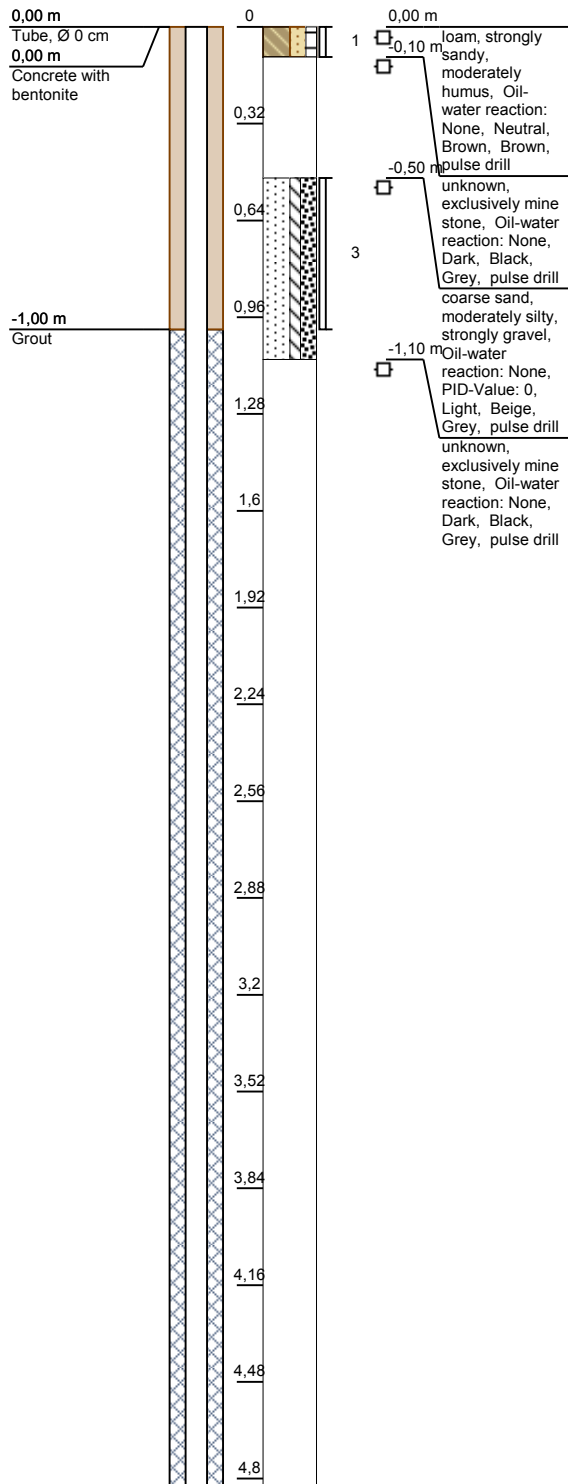
Project name: EBS Brunssum - Complete



Code: PBMW03 - 1

Date: 27/11/2012

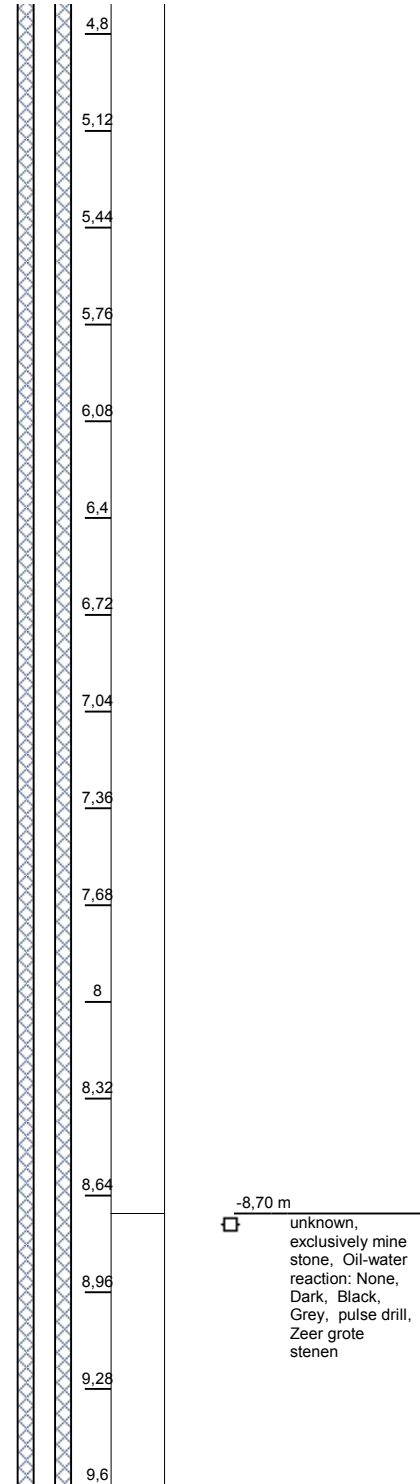
Groundwater level: 14 m Depth: 16 m



Code: PBMW03 - 2

Date: 27/11/2012

Groundwater level: 14 m Depth: 16 m



Project code: 46326246

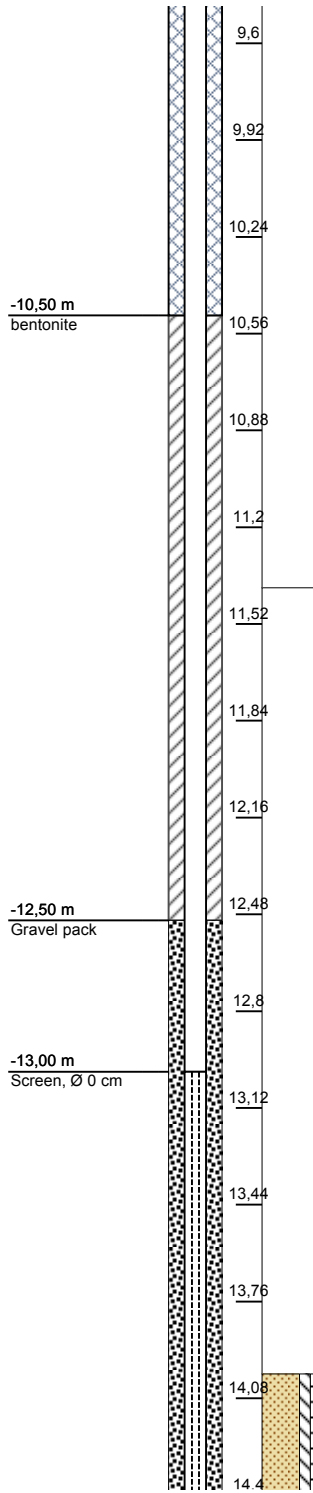
Project name: EBS Brunssum - Complete



Code: PBMW03 - 3

Date: 27/11/2012

Groundwater level: 14 m Depth: 16 m



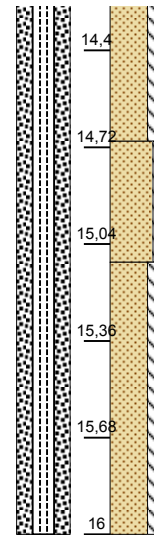
-11.40 m
 □ unknown, exclusively mine stone, Oil-water reaction: None, Dark, Black, Grey, pulse drill

-14.00 m
 □ fine sand, moderately silty, slightly humus, Oil-water reaction: None, PID-Value: 0, pulse drill

Code: PBMW03 - 4

Date: 27/11/2012

Groundwater level: 14 m Depth: 16 m



reaction: None, PID-Value: 0, Neutral, Grey, Brown, pulse drill

-14.70 m
 □ fine sand, moderately silty, Oil-water reaction: None, Light, Grey, Grey, pulse drill

-15.10 m
 □ fine sand, strongly silty, moderately clay fragments, slightly rust containing, Oil-water reaction: None, Neutral, Grey, Beige, pulse drill

Project code: 46326246

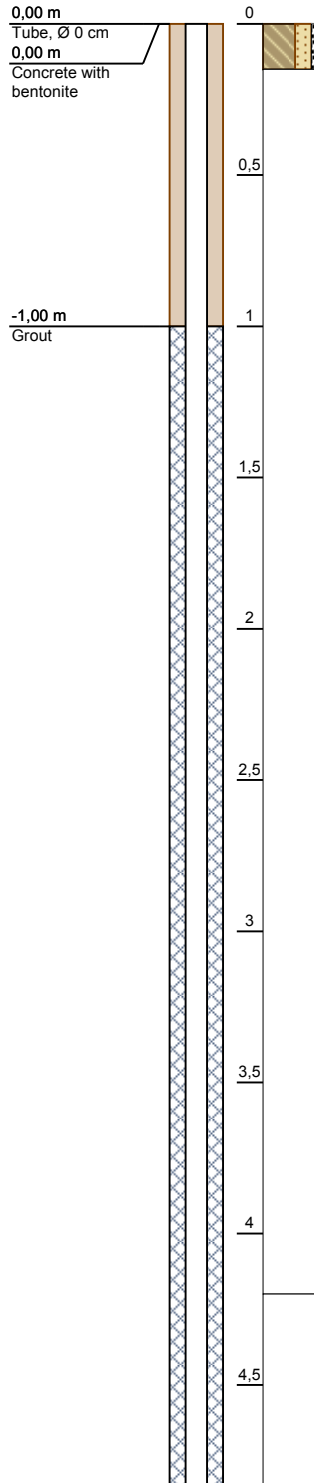
Project name: EBS Brunssum - Complete



Code: PBMW04 - 1

Date: 16/11/2012

Groundwater level: 17 m Depth: 25 m



0,00 m
Tube, Ø 0 cm
Concrete with bentonite

0,00 m
loam, strongly sandy, slightly gravel, Oil-water reaction: None, Dark, Brown, Brown, pulse drill

-0,15 m

unknown, exclusively mine stone, slightly debris containing, Oil-water reaction: None, Dark, Black, Grey, pulse drill

-1,00 m
Grout

0,5

1

1,5

2

2,5

3

3,5

4

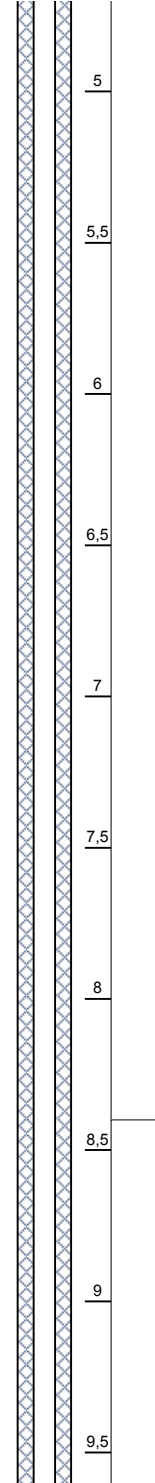
4,5

-4,20 m
unknown, exclusively mine stone, moderately sand, Oil-water reaction: None, Dark, Black, Grey, pulse drill

Code: PBMW04 - 2

Date: 16/11/2012

Groundwater level: 17 m Depth: 25 m



0,00 m

5

5,5

6

6,5

7

7,5

8

8,5

9

9,5

-8,40 m
unknown, exclusively mine stone, strongly ***TRANS***, Oil-water reaction: None, PID-Value: 0, Dark, Black, Grey, pulse drill, Groot aandeel kolengruis. Weing grote s

Project code: 46326246

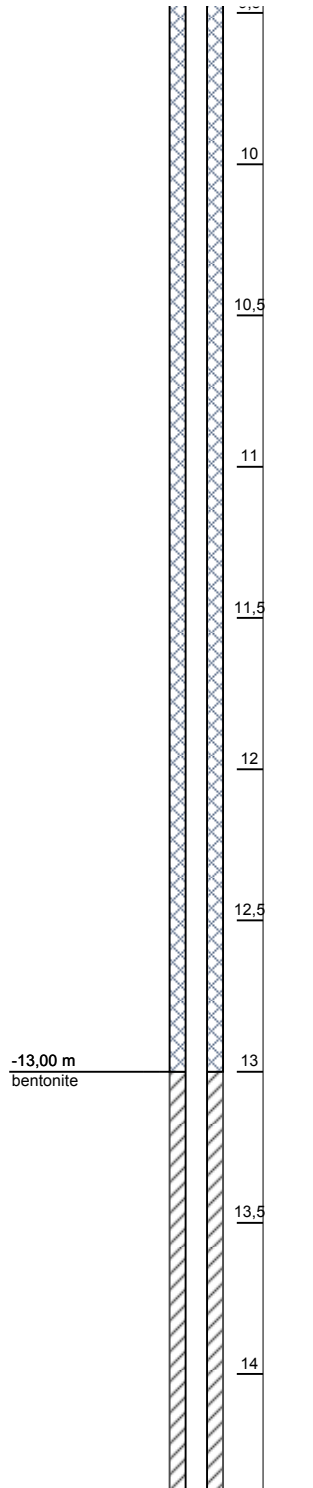
Project name: EBS Brunssum - Complete



Code: PBMW04 - 3

Date: 16/11/2012

Groundwater level: 17 m Depth: 25 m

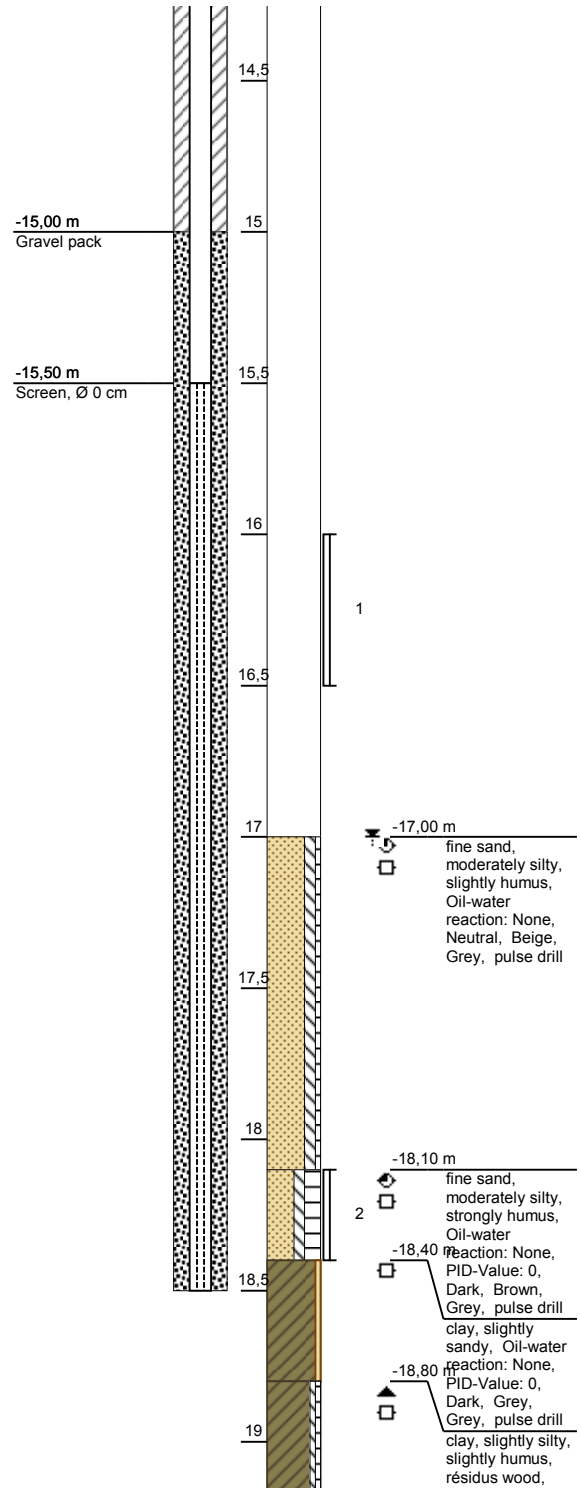


Project code: 46326246

Code: PBMW04 - 4

Date: 16/11/2012

Groundwater level: 17 m Depth: 25 m



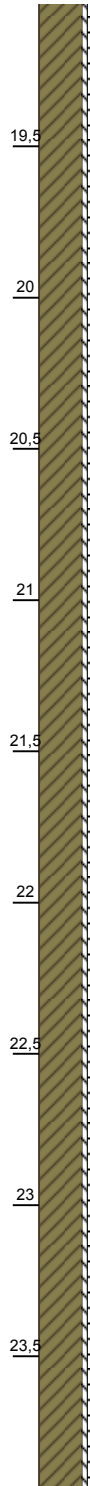
Project name: EBS Brunssum - Complete



Code: PBMW04 - 5

Date: 16/11/2012

Groundwater level: 17 m Depth: 25 m

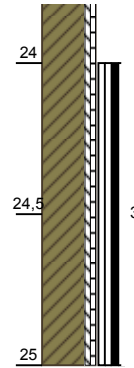


slightly humus,
résidus wood,
Oil-water
reaction: None,
PID-Value: 0,
Dark, Grey,
Brown, pulse
drill

Code: PBMW04 - 6

Date: 16/11/2012

Groundwater level: 17 m Depth: 25 m



Project code: 46326246

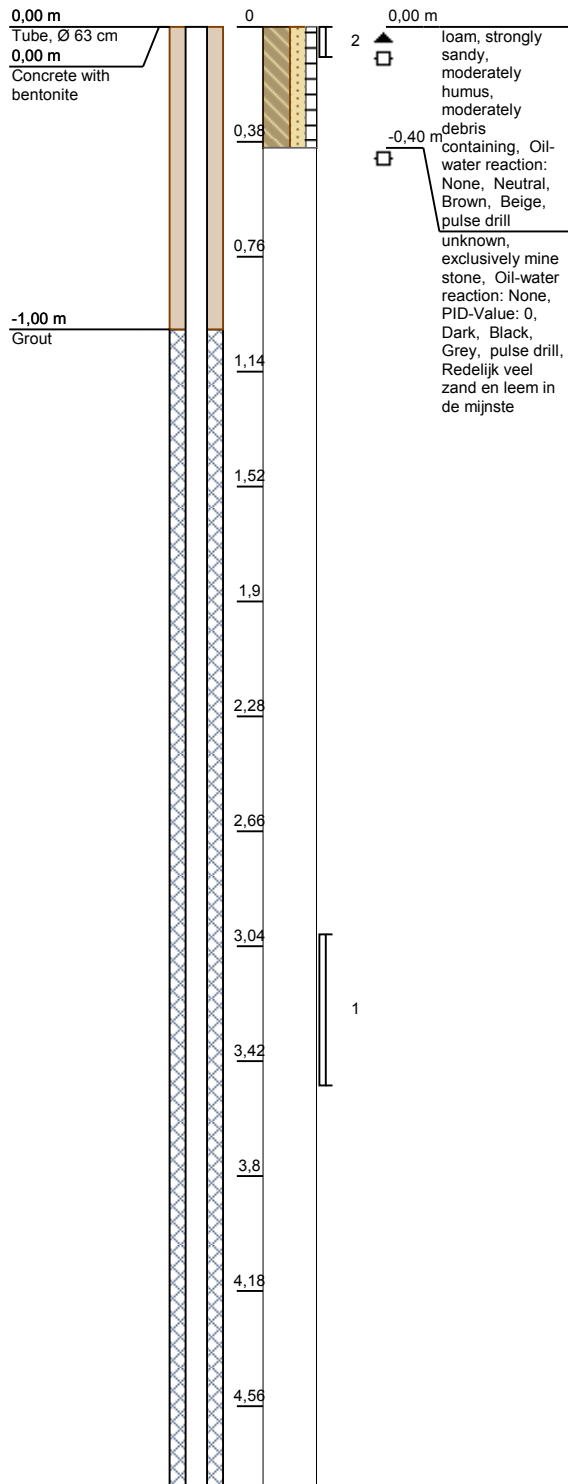
Project name: EBS Brunssum - Complete



Code: PBMW05 - 1

Date: 26/11/2012

Groundwater level: 16,5 m Depth: 19 m

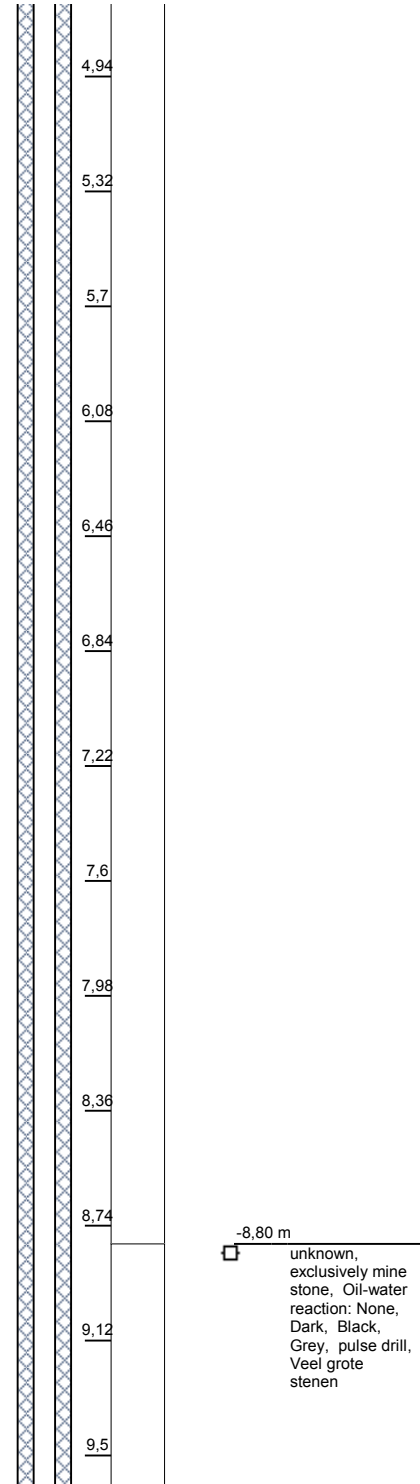


Project code: 46326246

Code: PBMW05 - 2

Date: 26/11/2012

Groundwater level: 16,5 m Depth: 19 m



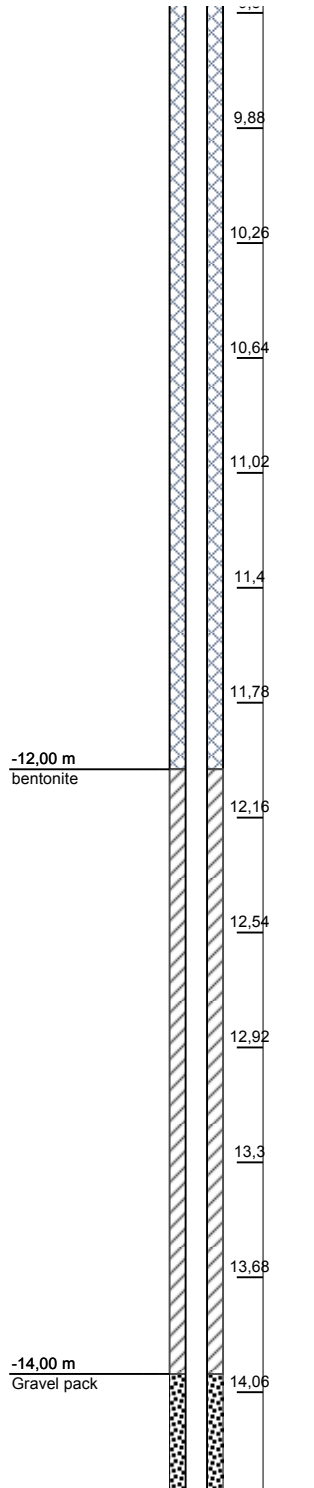
Project name: EBS Brunssum - Complete



Code: PBMW05 - 3

Date: 26/11/2012

Groundwater level: 16,5 m Depth: 19 m

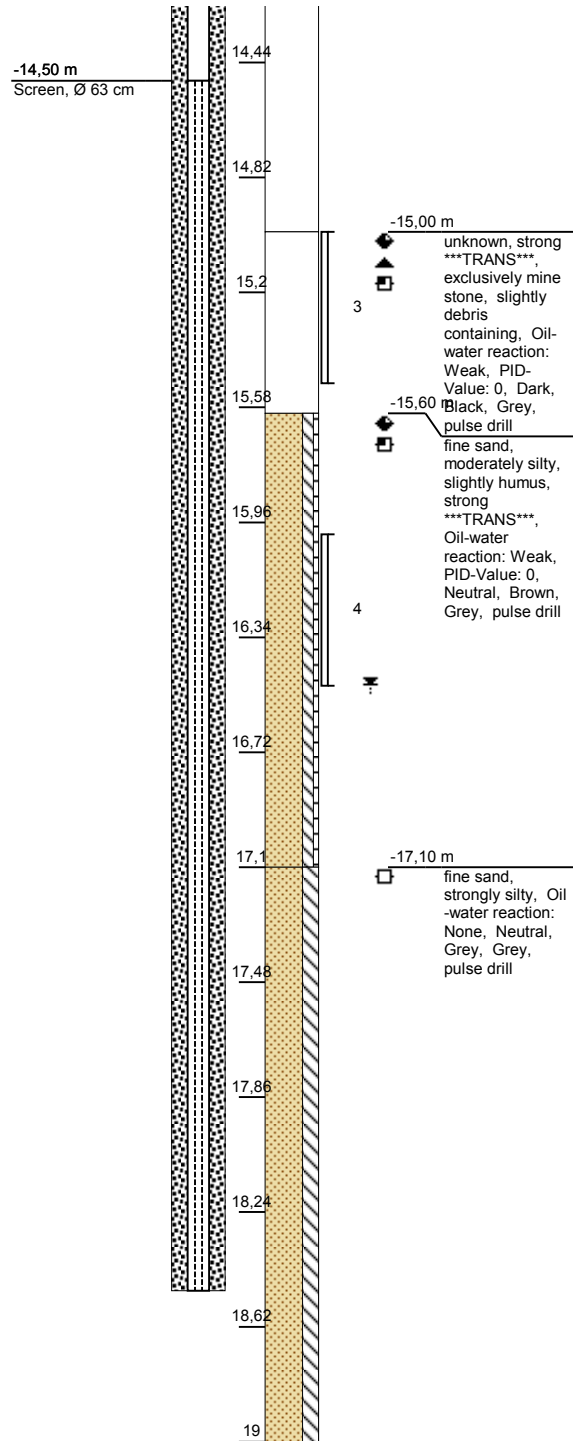


Project code: 46326246

Code: PBMW05 - 4

Date: 26/11/2012

Groundwater level: 16,5 m Depth: 19 m



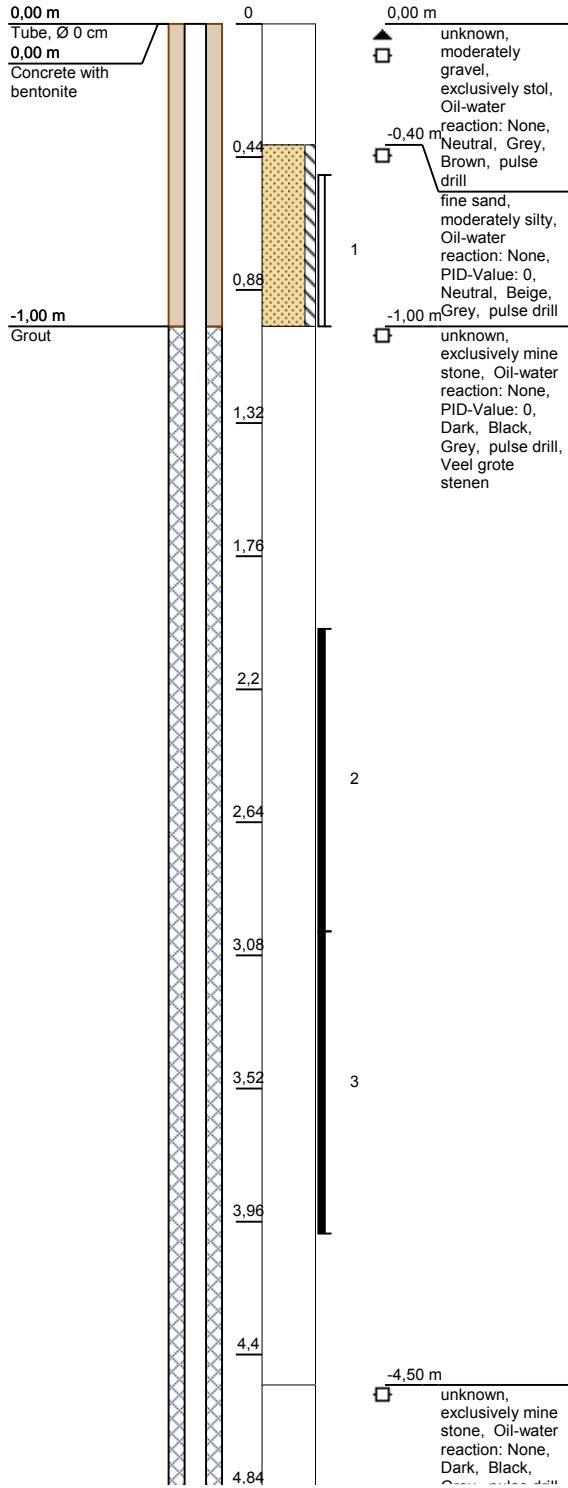
Project name: EBS Brunssum - Complete



Code: PBMW06 - 1

Date: 23/11/2012

Groundwater level: 15,5 m Depth: 22 m

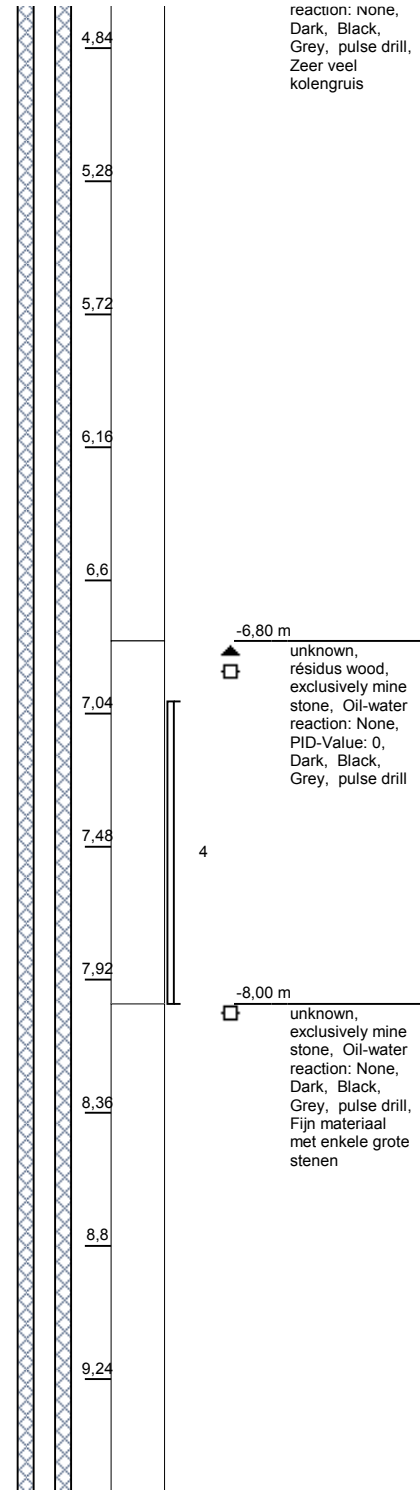


Project code: 46326246

Code: PBMW06 - 2

Date: 23/11/2012

Groundwater level: 15,5 m Depth: 22 m



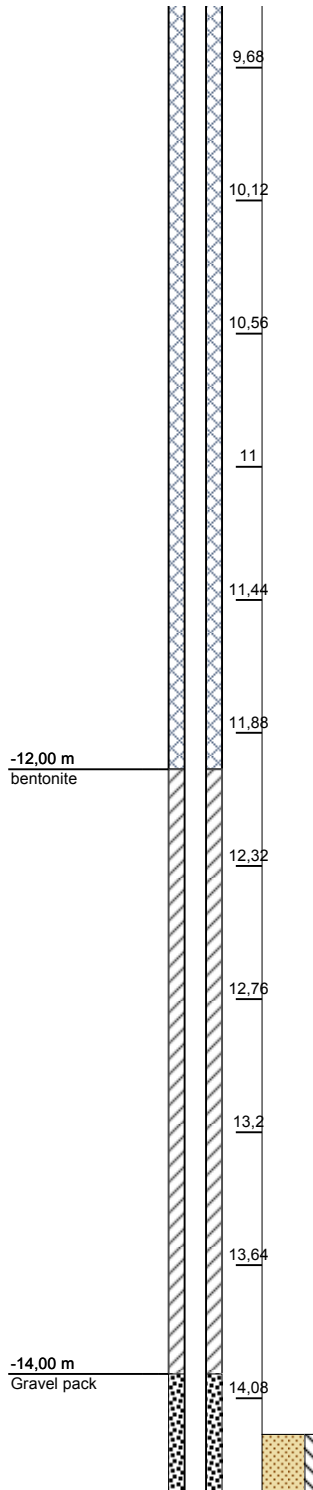
Project name: EBS Brunssum - Complete



Code: PBMW06 - 3

Date: 23/11/2012

Groundwater level: 15,5 m Depth: 22 m

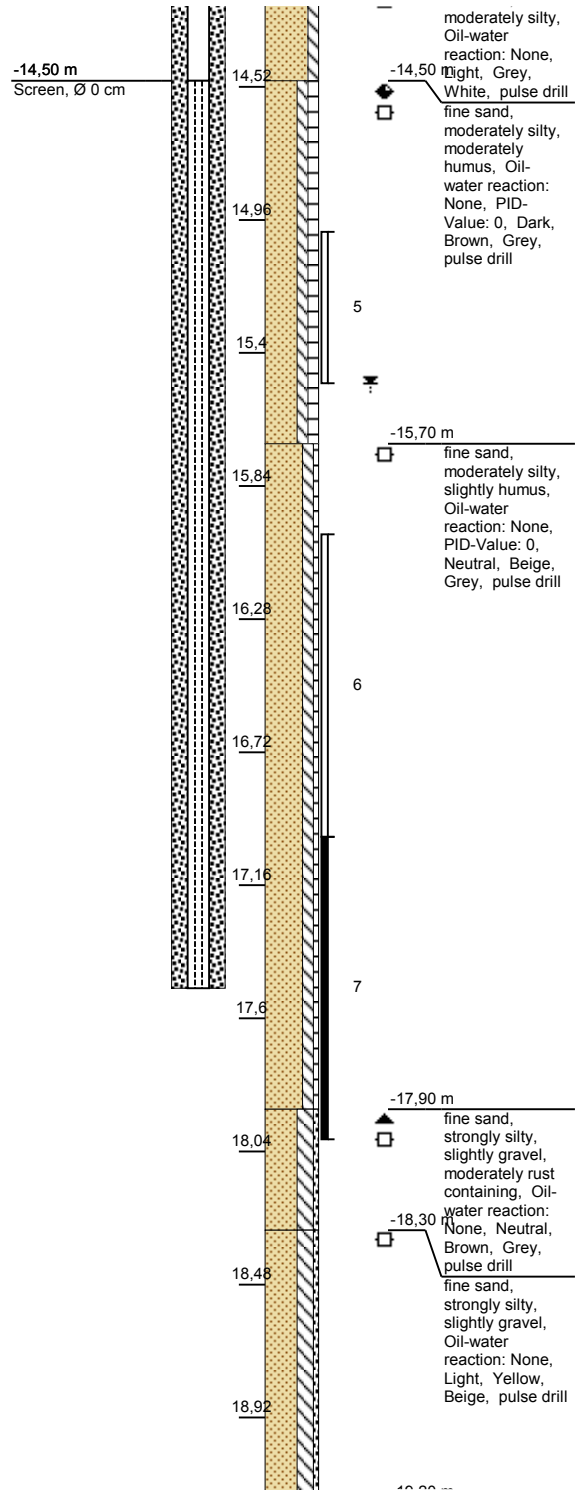


Project code: 46326246

Code: PBMW06 - 4

Date: 23/11/2012

Groundwater level: 15,5 m Depth: 22 m



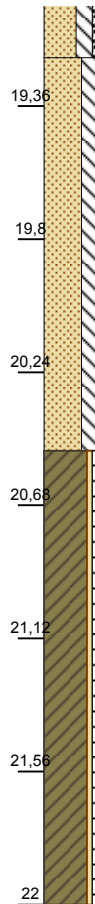
Project name: EBS Brunssum - Complete



Code: PBMW06 - 5

Date: 23/11/2012

Groundwater level: 15,5 m Depth: 22 m



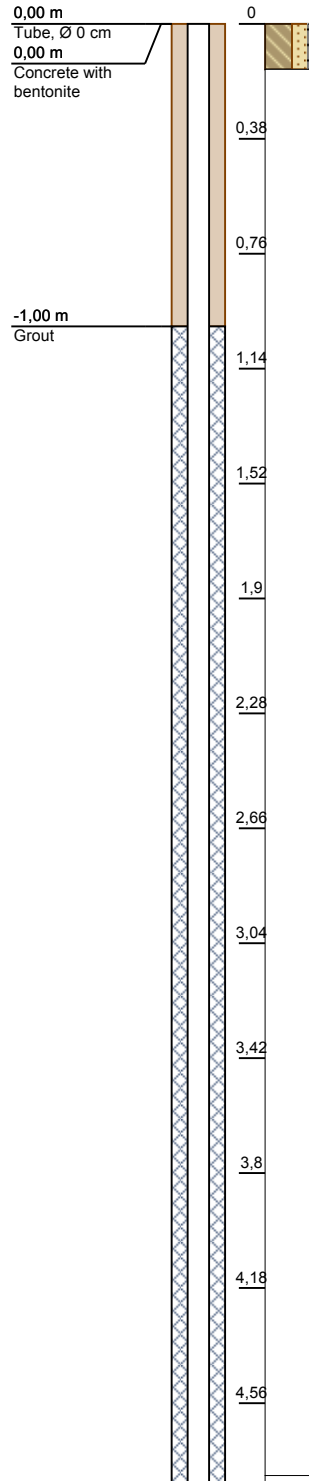
-19,20 m
□ fine sand, strongly silty, Oil-water reaction: None, Light, Grey, Beige, pulse drill

-20,50 m
□ clay, slightly sandy, slightly humus, Oil-water reaction: None, Neutral, Grey, Brown, pulse drill

Code: PBMW07 - 1

Date: 20/11/2012

Groundwater level: 16,5 m Depth: 19 m



0,00 m
Tube, Ø 0 cm
0,00 m
Concrete with bentonite

-1,00 m
Grout

0,00 m
□ loam, strongly sandy, moderately humus, Oil-water reaction: None, Neutral, Brown, pulse drill
-0,15 m
□ unknown, exclusively mine stone, Oil-water reaction: None, PID-Value: 0, Dark, Black, Grey, pulse drill, Veel grote stenen

2

3

-4,80 m

Project code: 46326246

Project name: EBS Brunssum - Complete



Code: PBMW07 - 2

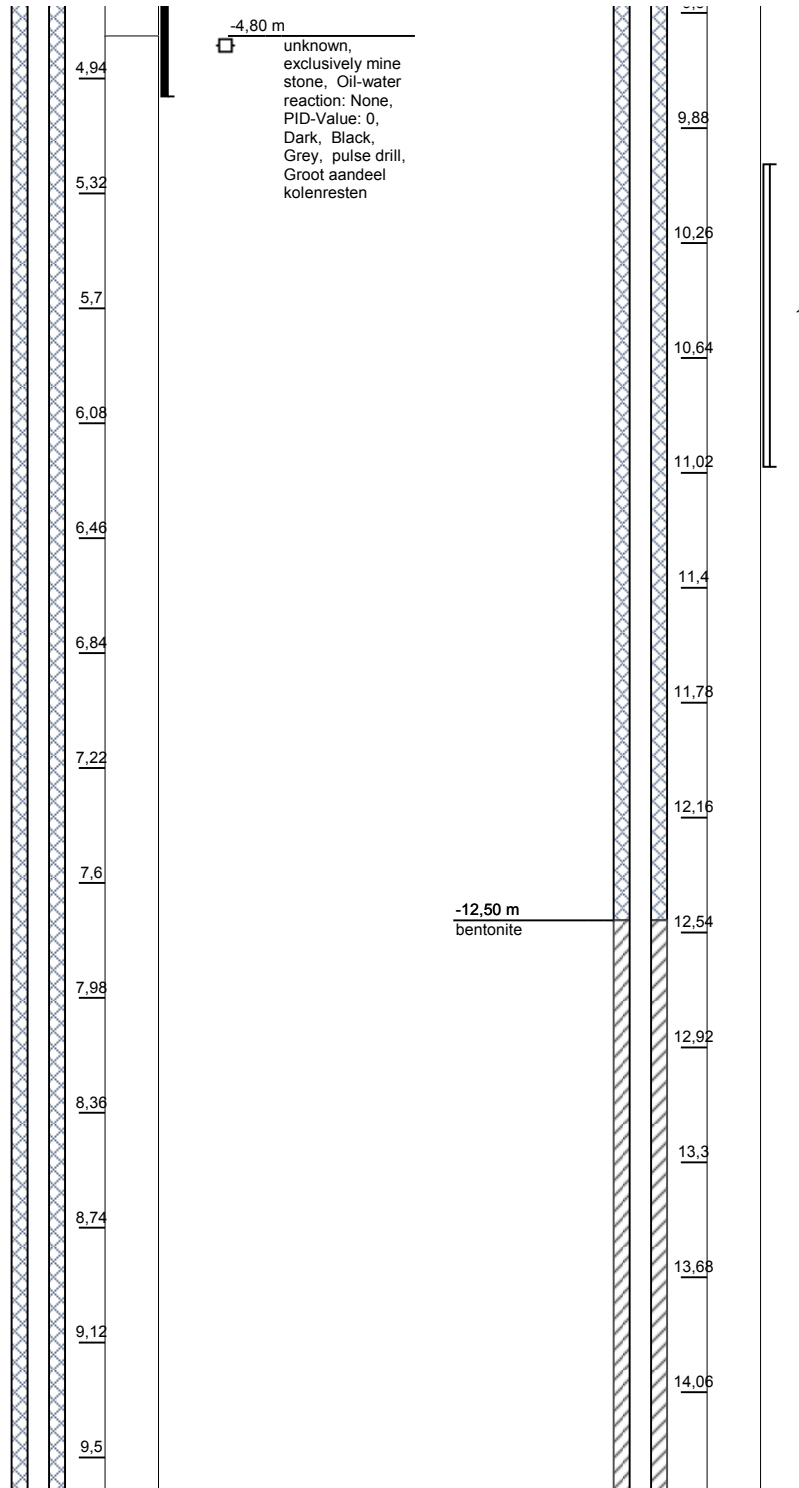
Date: 20/11/2012

Groundwater level: 16,5 m Depth: 19 m

Code: PBMW07 - 3

Date: 20/11/2012

Groundwater level: 16,5 m Depth: 19 m



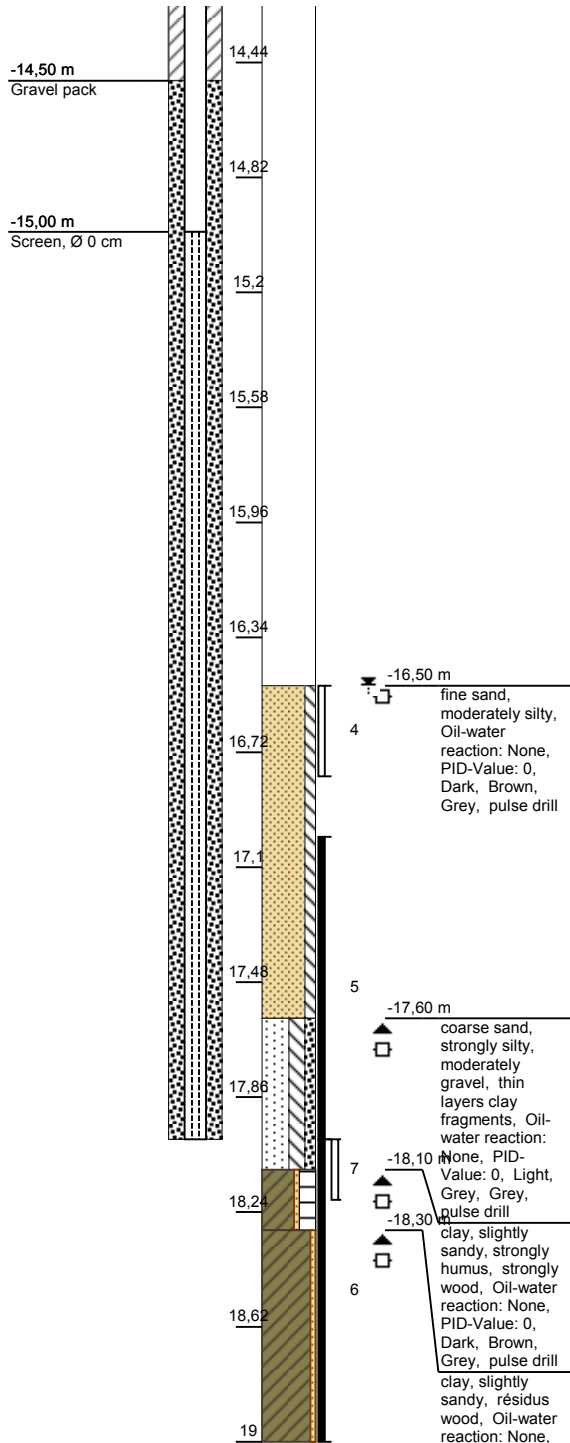
Project code: 46326246

Project name: EBS Brunssum - Complete

Code: PBMW07 - 4

Date: 20/11/2012

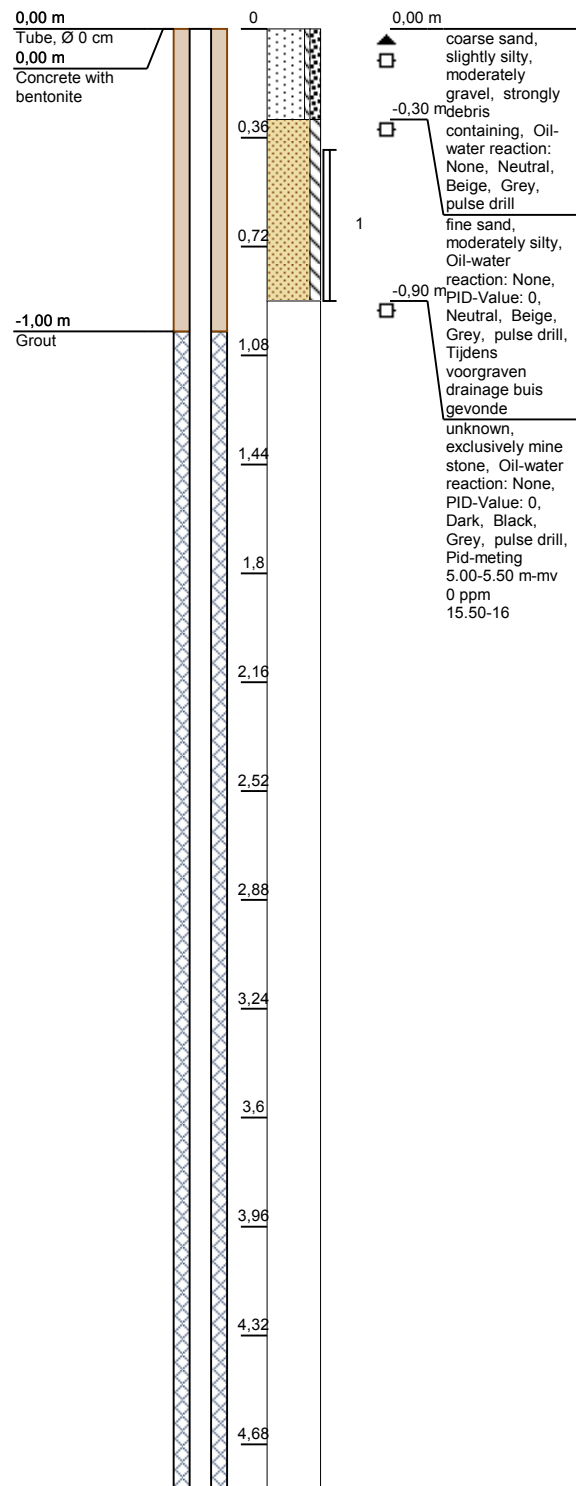
Groundwater level: 16,5 m Depth: 19 m



Code: PBMW08 - 1

Date: 7/11/2012

Groundwater level: 16 m Depth: 18 m

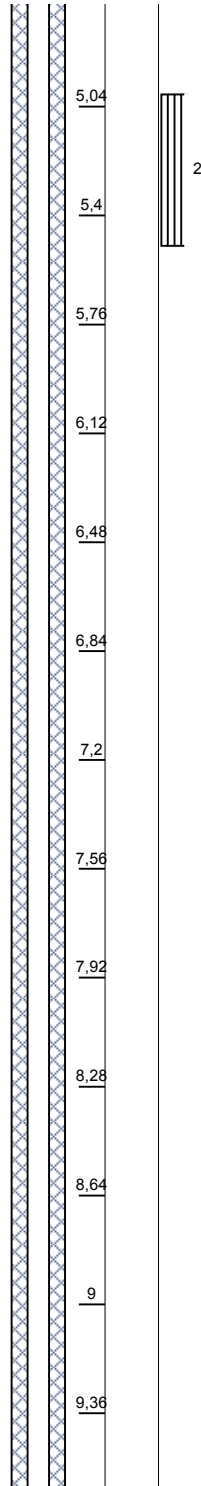




Code: PBMW08 - 2

Date: 7/11/2012

Groundwater level: 16 m Depth: 18 m

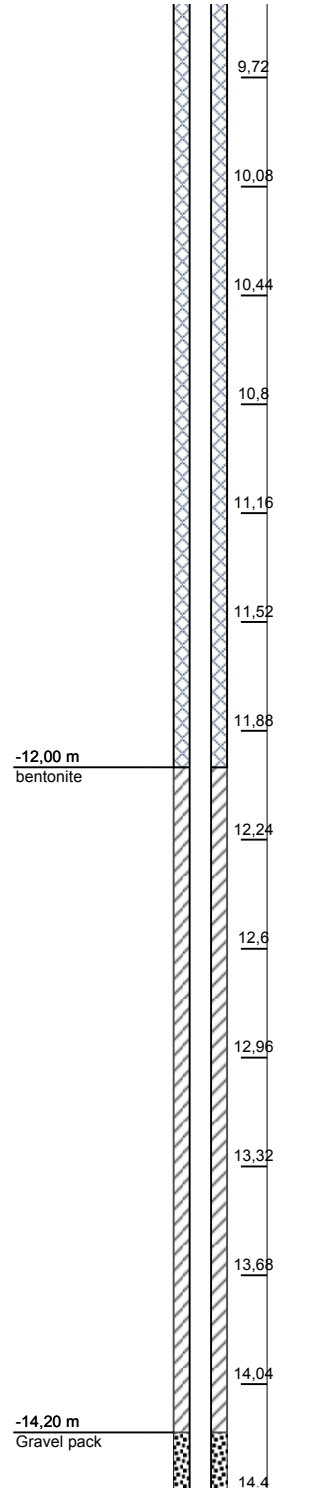


Project code: 46326246

Code: PBMW08 - 3

Date: 7/11/2012

Groundwater level: 16 m Depth: 18 m

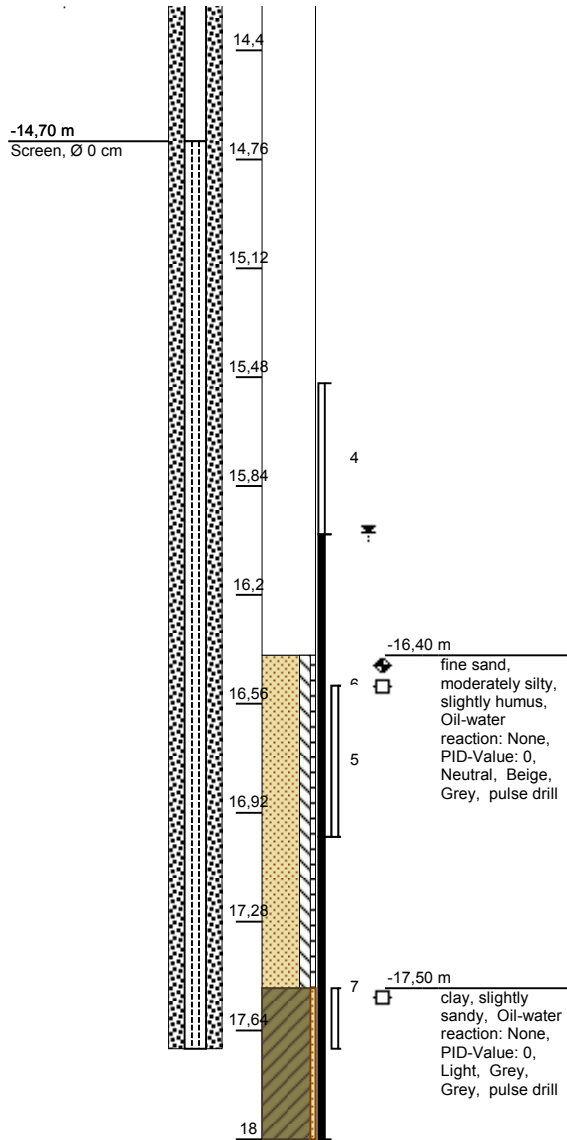


Project name: EBS Brunssum - Complete

Code: PBMW08 - 4

Date: 7/11/2012

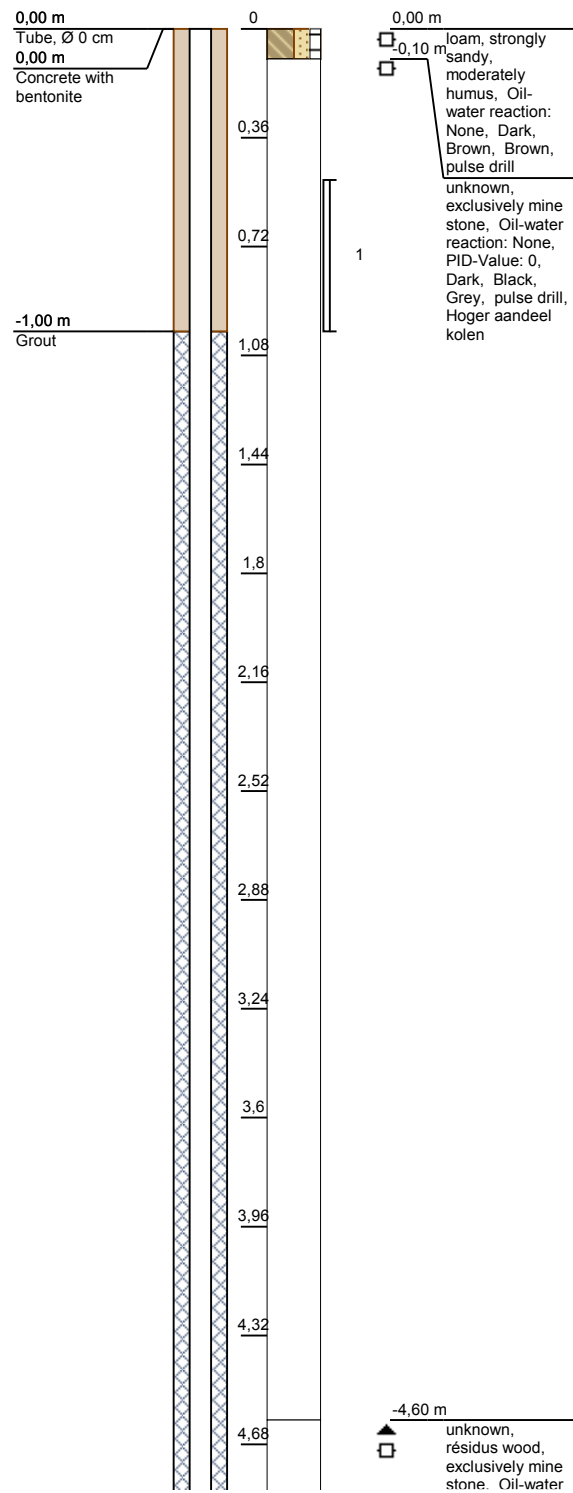
Groundwater level: 16 m Depth: 18 m



Code: PBMW09 - 1

Date: 14/11/2012

Groundwater level: 16 m Depth: 18 m

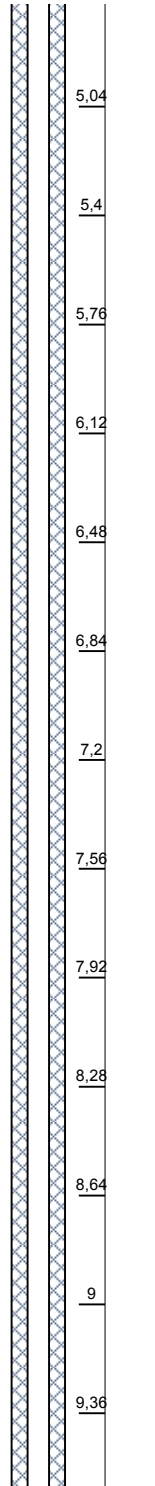




Code: PBMW09 - 2

Date: 14/11/2012

Groundwater level: 16 m Depth: 18 m

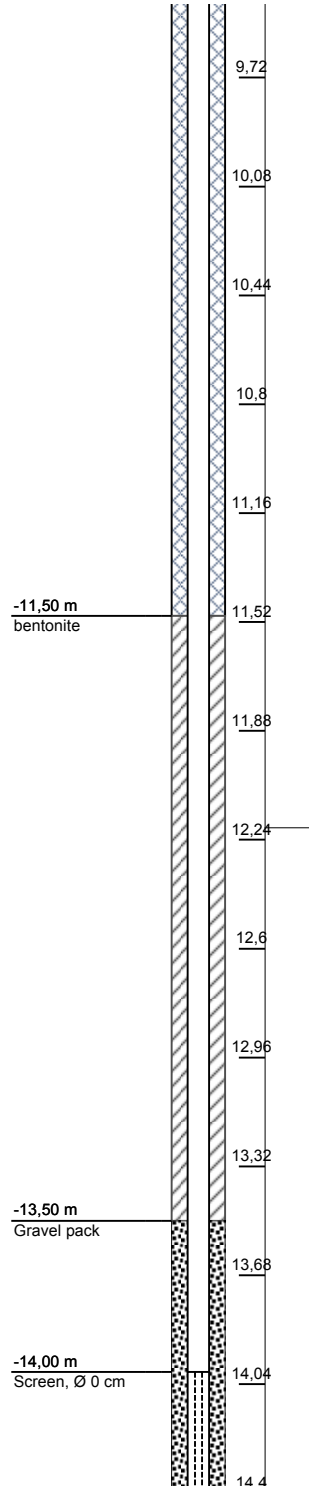


□
unknown, exclusively mine stone, Oil-water reaction: None, Dark, Black, Grey, pulse drill, Groot aandeel kolen

Code: PBMW09 - 3

Date: 14/11/2012

Groundwater level: 16 m Depth: 18 m



□
-12.20 m
unknown, exclusively mine stone, Oil-water reaction: None, Dark, Black, Grey, pulse drill, Groot aandeel kolen

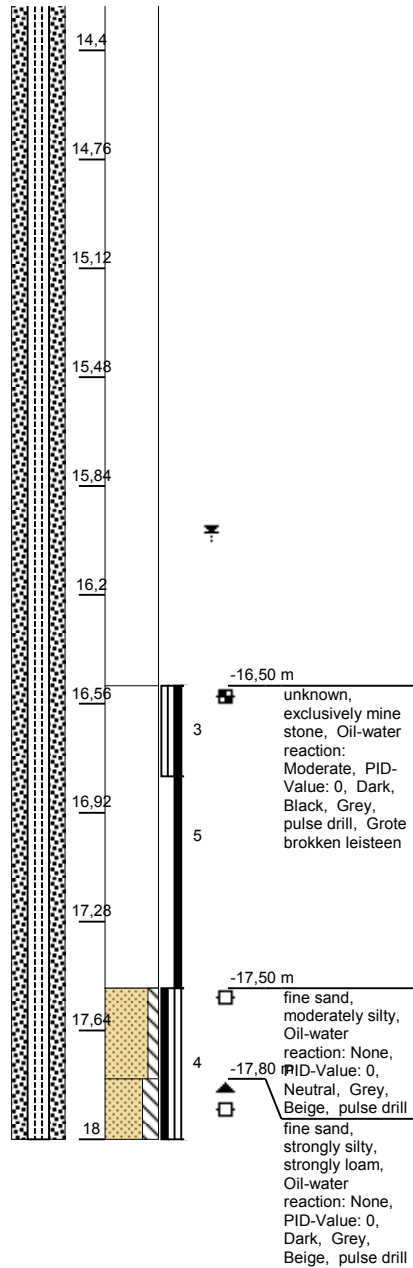
Project code: 46326246

Project name: EBS Brunssum - Complete

Code: PBMW09 - 4

Date: 14/11/2012

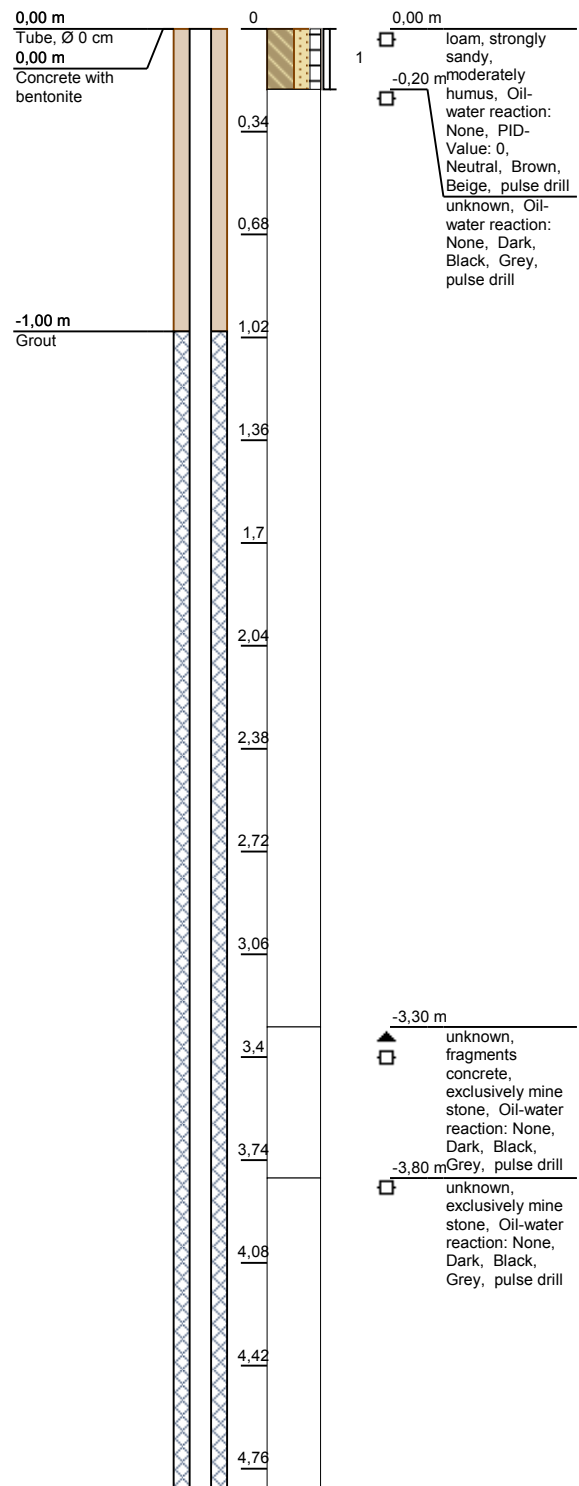
Groundwater level: 16 m Depth: 18 m



Code: PBMW10 - 1

Date: 12/11/2012

Groundwater level: 14,5 m Depth: 17 m





Code: PBMW10 - 2

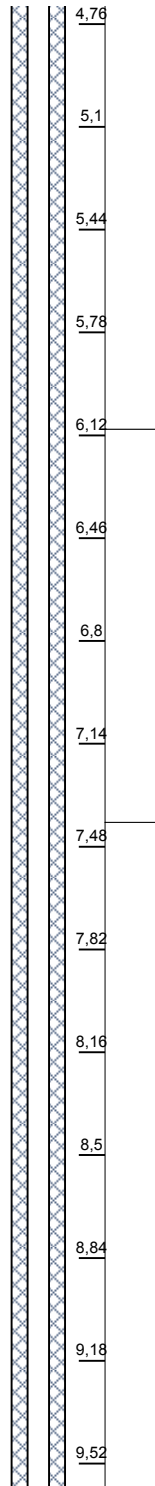
Date: 12/11/2012

Groundwater level: 14,5 m Depth: 17 m

Code: PBMW10 - 3

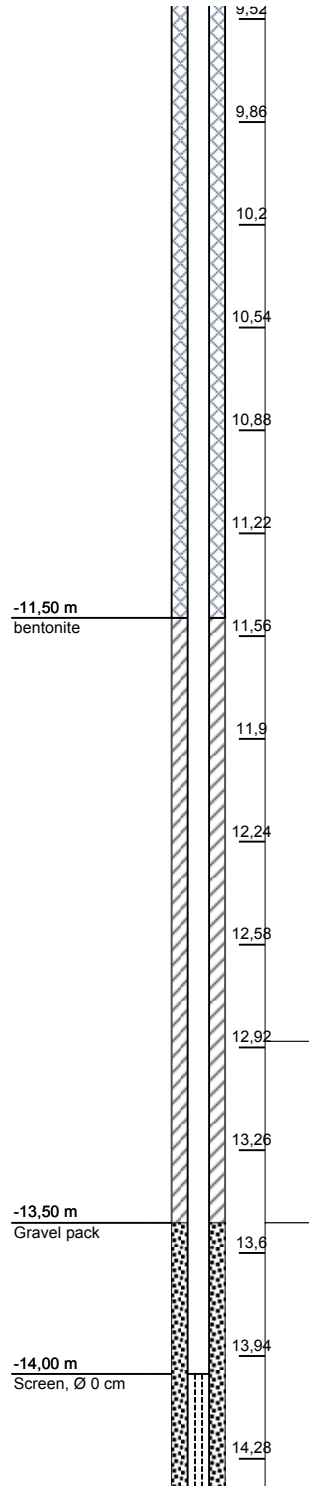
Date: 12/11/2012

Groundwater level: 14,5 m Depth: 17 m



-6,10 m
▲
□ unknown, résidus wood, exclusively mine stone, Oil-water reaction: None, Dark, Black, Grey, pulse drill

-7,40 m
□ unknown, exclusively mine stone, Oil-water reaction: None, Dark, Black, Grey, pulse drill



-12,90 m
▲
□ unknown, exclusively mine stone, résidus wood, Oil-water reaction: None, Dark, Black, Grey, pulse drill

-13,50 m
□ unknown, exclusively mine stone, Oil-water reaction: None, PID-Value: 0, Dark, Black, Grey, pulse drill

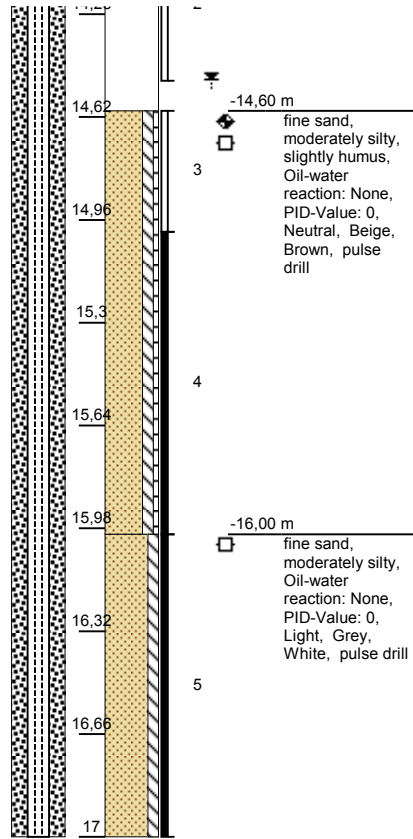
Project code: 46326246

Project name: EBS Brunssum - Complete

Code: PBMW10 - 4

Date: 12/11/2012

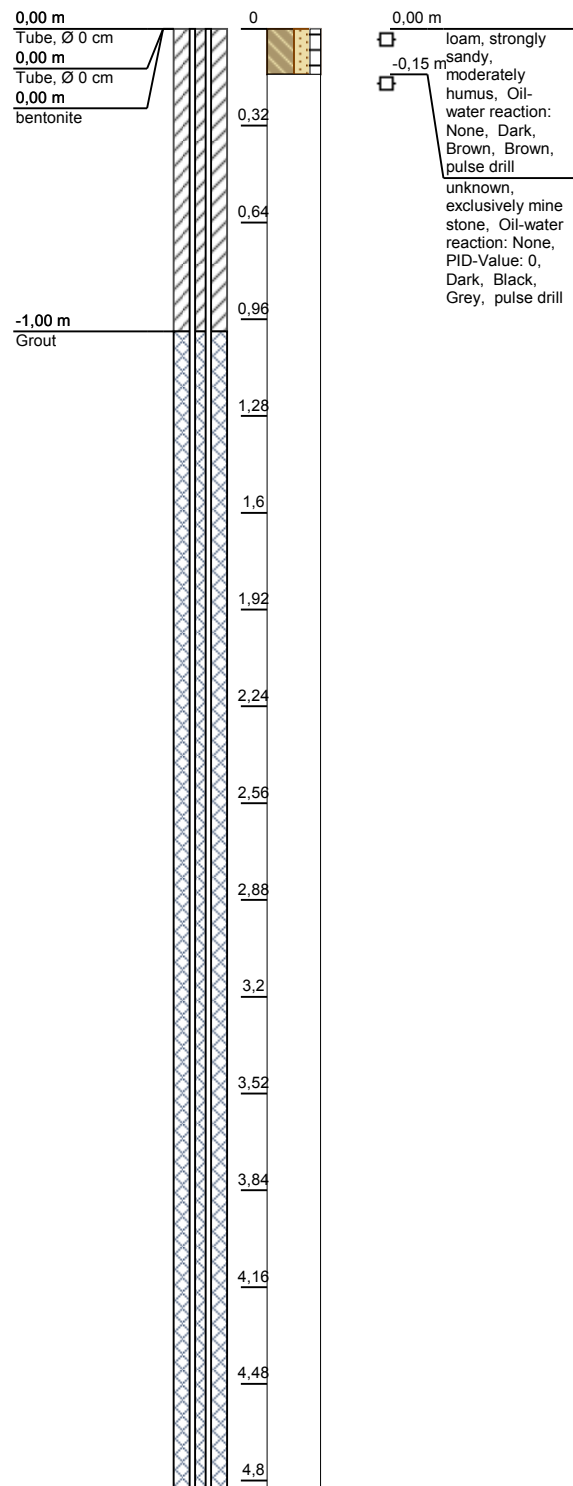
Groundwater level: 14,5 m Depth: 17 m



Code: PBMW11 - 1

Date: 15/11/2012

Groundwater level: 14 m Depth: 16 m

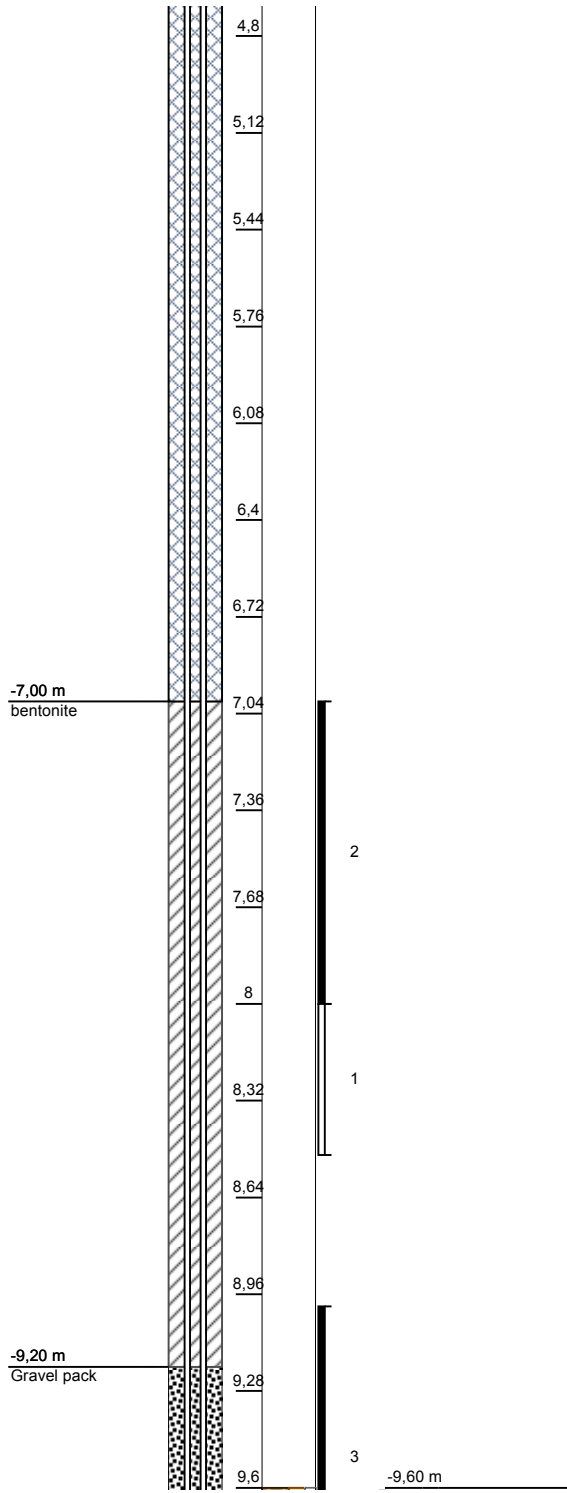




Code: PBMW11 - 2

Date: 15/11/2012

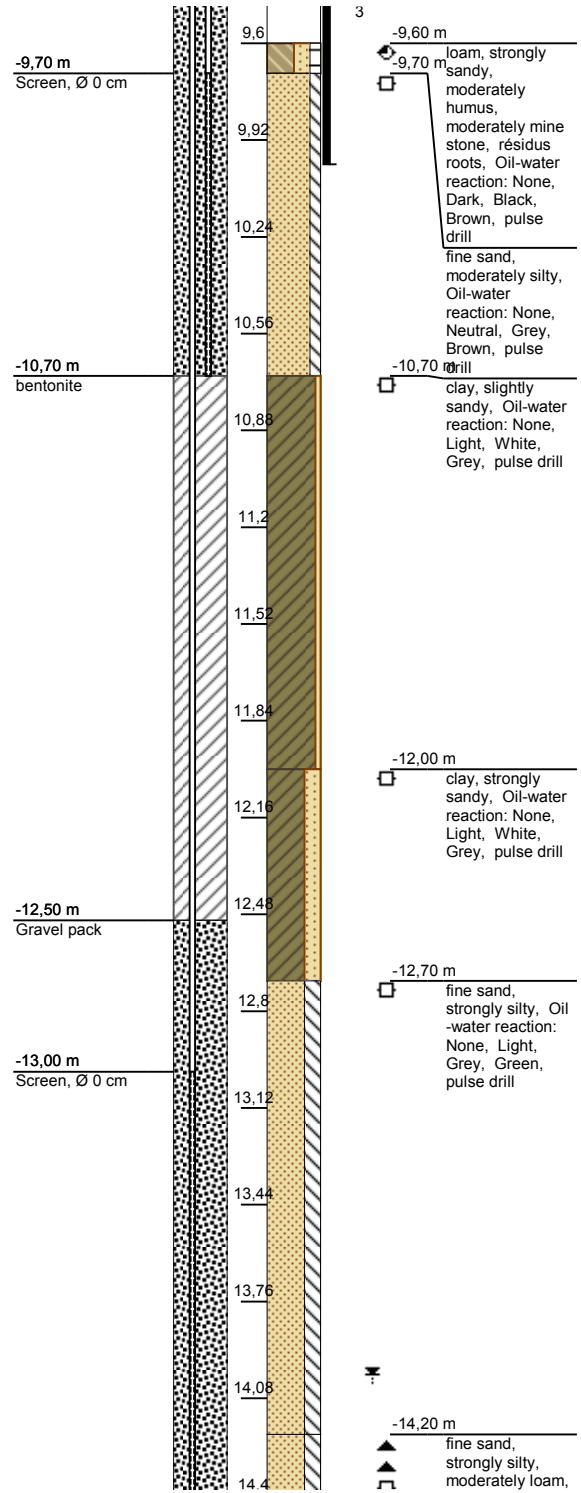
Groundwater level: 14 m Depth: 16 m



Code: PBMW11 - 3

Date: 15/11/2012

Groundwater level: 14 m Depth: 16 m



Project code: 46326246

Project name: EBS Brunssum - Complete

Code: PBMW11 - 4

Date: 15/11/2012

Groundwater level: 14 m

Depth: 16 m

